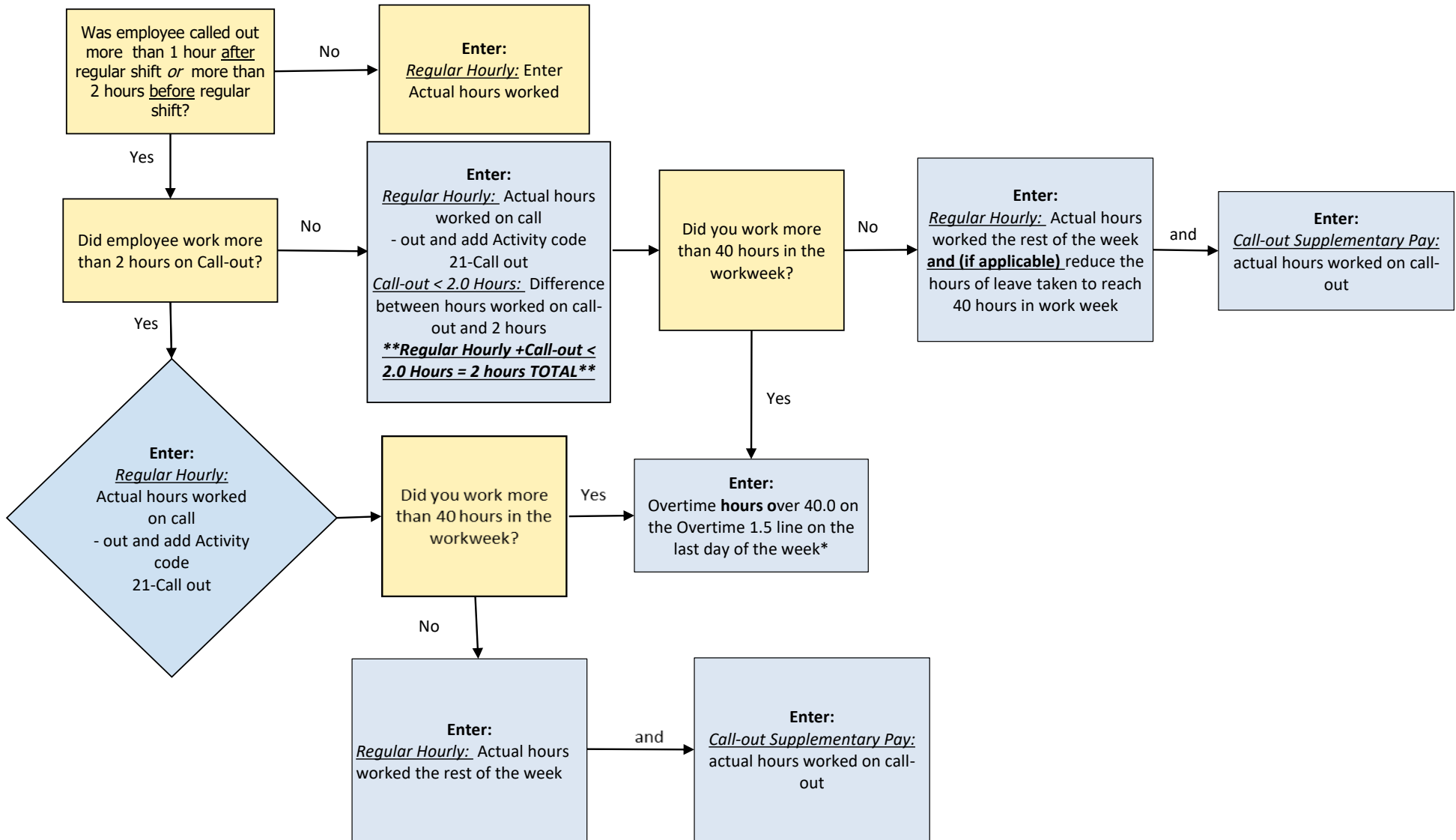


## Call-out Pay and Call-out Supplemental Pay



\* If hours worked in overtime entry does not account for all hours worked on call-out, then enter hours worked not accounted for in overtime in call-out supplementary pay.  
 EX: worked a 5 hour call-out, but only 43 hours total in the week. Enter 3 hours in overtime and 2 hours in call-out supplementary pay.